

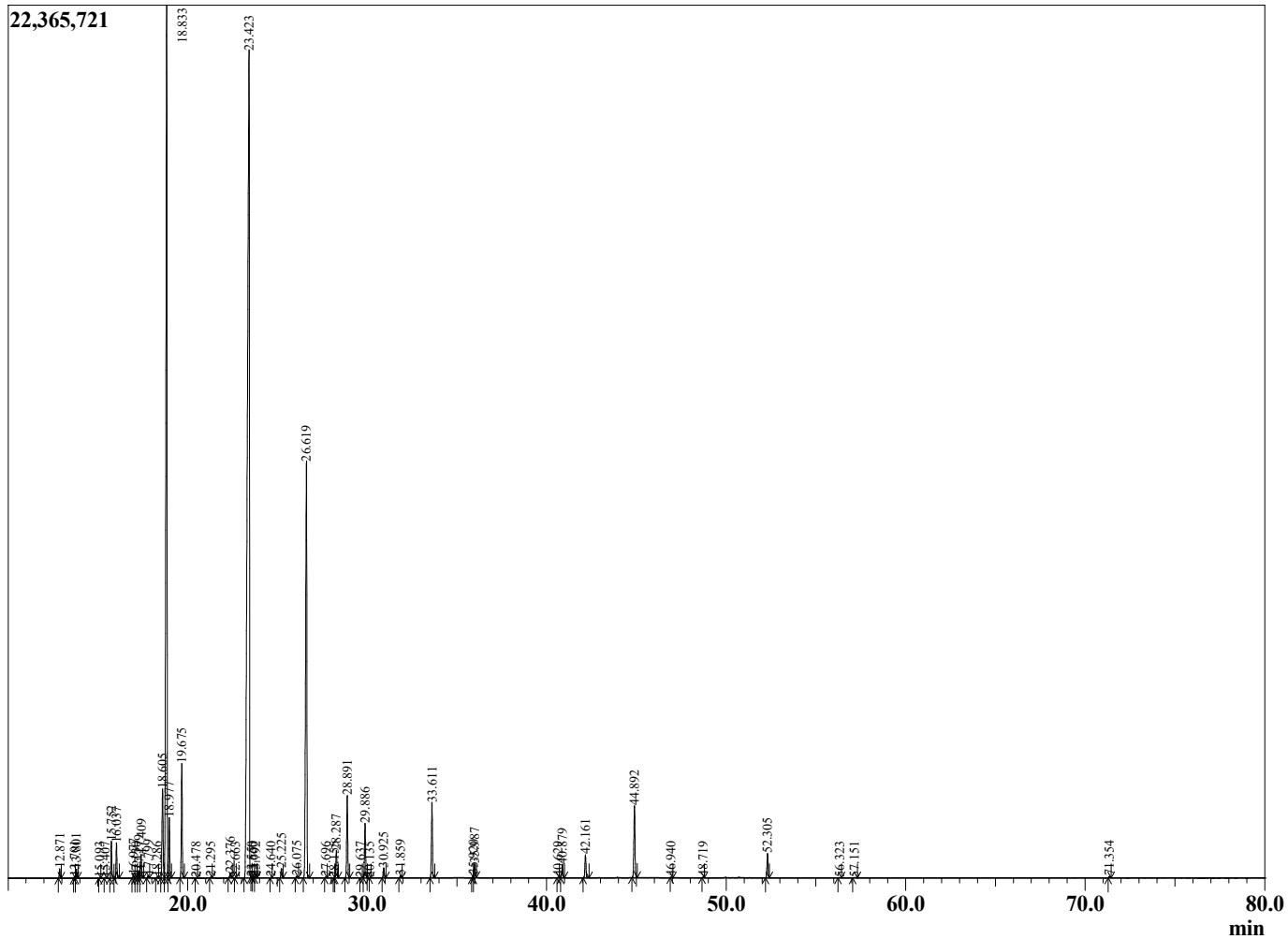
Sample Information

Sample Type : Essential Oil
 Sample Name : Lavandula latifolia
 Injection Volume : 0.10



Lavender Spike
 LOT# SPD28-DE
 Country: Spain

Chromatogram Lavandula latifolia



R.Time	Name	Area%
12.871	alpha-Pinene	0.18
13.701	alpha-Fenchene	0.03
13.801	Camphene	0.19
15.093	Sabinene	0.01
15.407	beta-Pinene	0.02
15.752	3-Octanone	0.77
16.037	Myrcene	0.75
16.977	para-Mentha-1(7),8-diene	0.07
17.130	alpha-Phellandrene	0.01
17.279	delta-3-Carene	0.16
17.409	Hexyl acetate	0.52
17.799	alpha-Terpinene	0.05
18.286	para-Cymene	0.02
18.605	Limonene	2.45
18.833	1,8-Cineole	25.54
18.977	cis-beta-Ocimene	1.33
19.675	trans-beta-Ocimene	2.64
20.478	gamma-Terpinene	0.01
21.295	cis-Linalool oxide (furanoid)	0.02
22.376	Terpinolene + trans-Linalool oxide (furanoid)	0.14
22.663	Unidentified	0.01
23.423	Linalool	41.15
23.550	Unidentified	0.00
23.660	Unidentified	0.00
23.792	1-Octen-3-yl-acetate	0.01
24.640	Fenchyl alcohol	0.01
25.225	allo-Ocimene	0.23
26.075	neo-allo-Ocimene	0.04
26.619	Camphor	12.86
27.696	Isoborneol	0.02
28.155	delta-Terpineol	0.00
28.287	Borneol	0.69
28.891	Terpinen-4-ol	2.09
29.637	Hexyl butyrate	0.01
29.886	alpha-Terpineol	1.41
30.135	Unidentified	0.00
30.925	Octyl acetate	0.26
31.859	Nerol	0.06
33.611	Linalyl acetate	1.93
35.920	Lavandulyl acetate	0.04
35.987	Bornyl acetate	0.39
40.629	Unidentified	0.01
40.879	Neryl acetate	0.35
42.161	Geranyl acetate	0.63
44.892	trans-beta-Caryophyllene	2.09
46.940	trans-beta-Farnesene	0.01
48.719	Germacrene D	0.01
52.305	trans-alpha-Bisabolene	0.68
56.323	Cedrol	0.01
57.151	Cedryl methyl ether	0.02
71.354	Unidentified	0.05
		100.00